

Trichodectes canis: female (left); male (right).

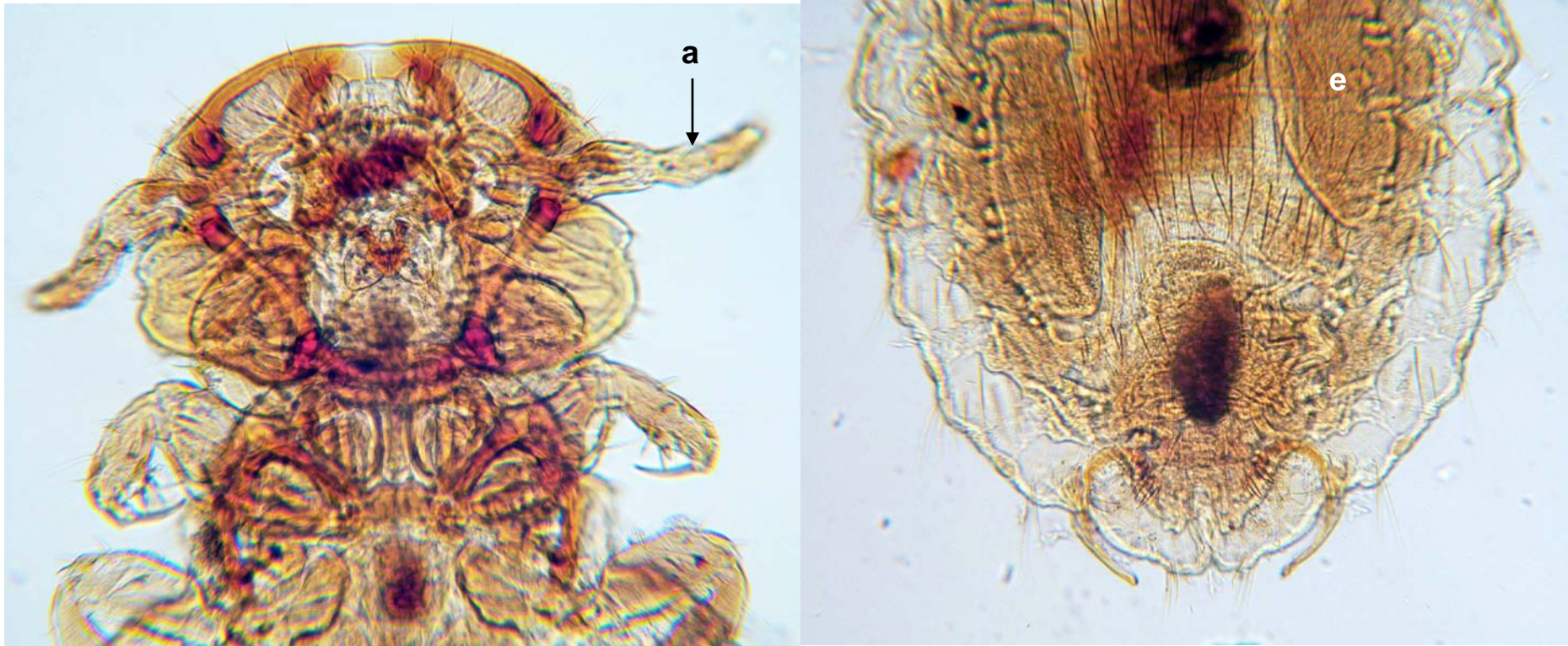


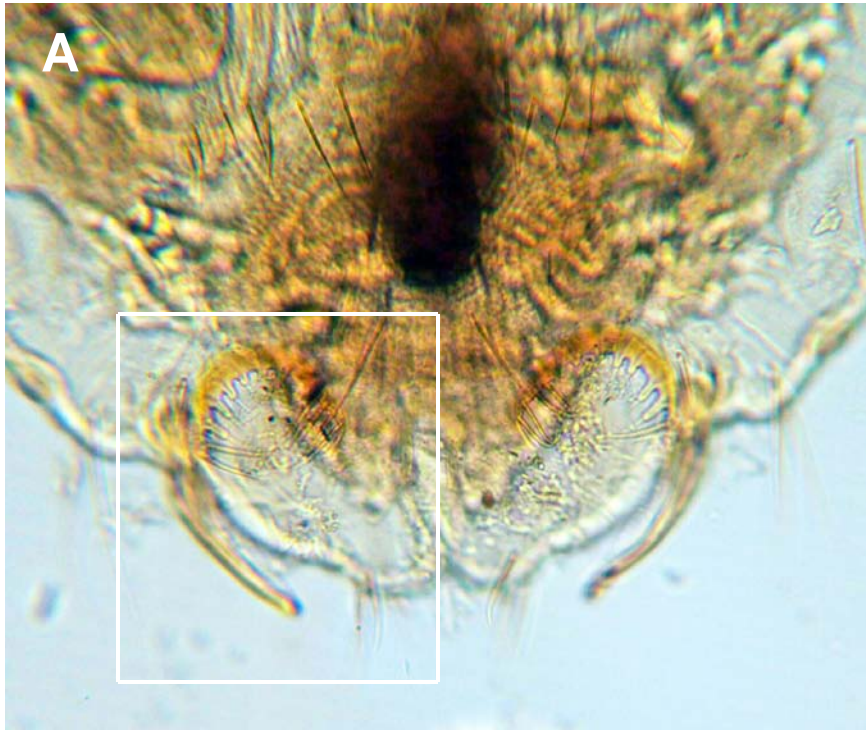
Total body length = 1.8 mm.



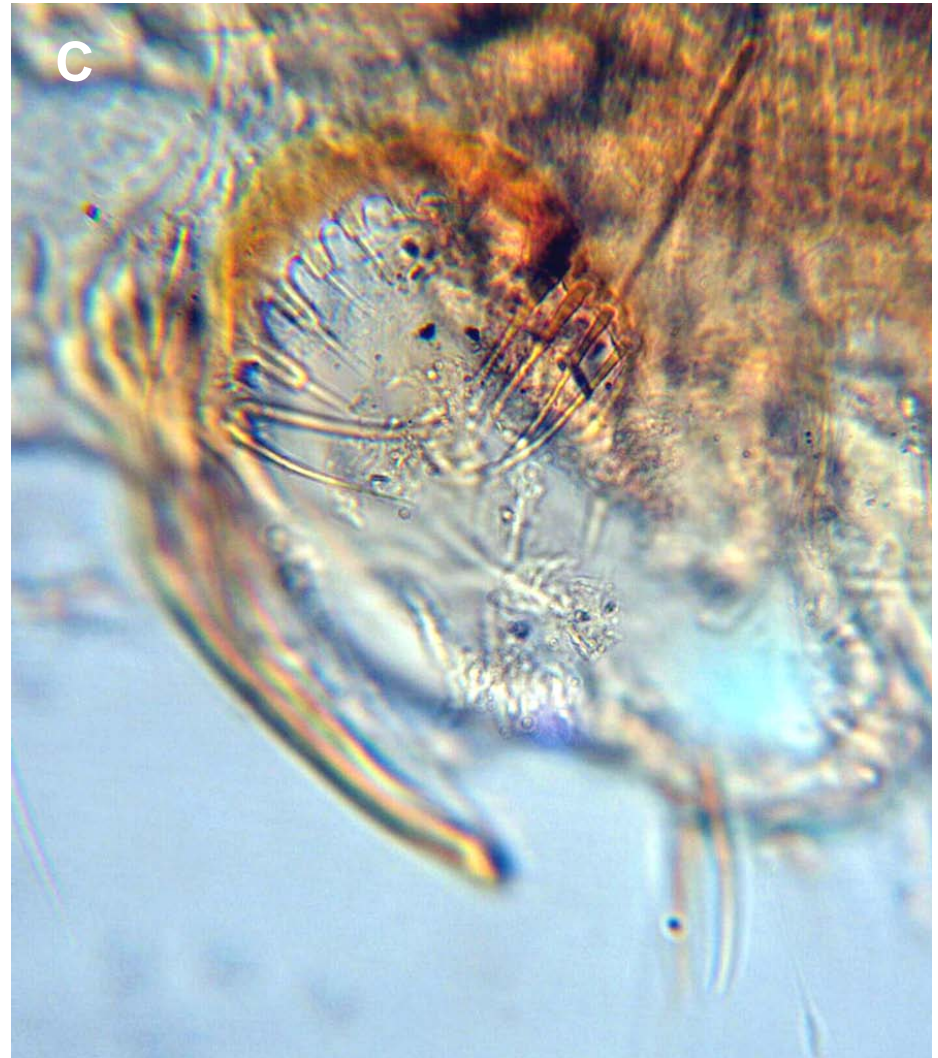
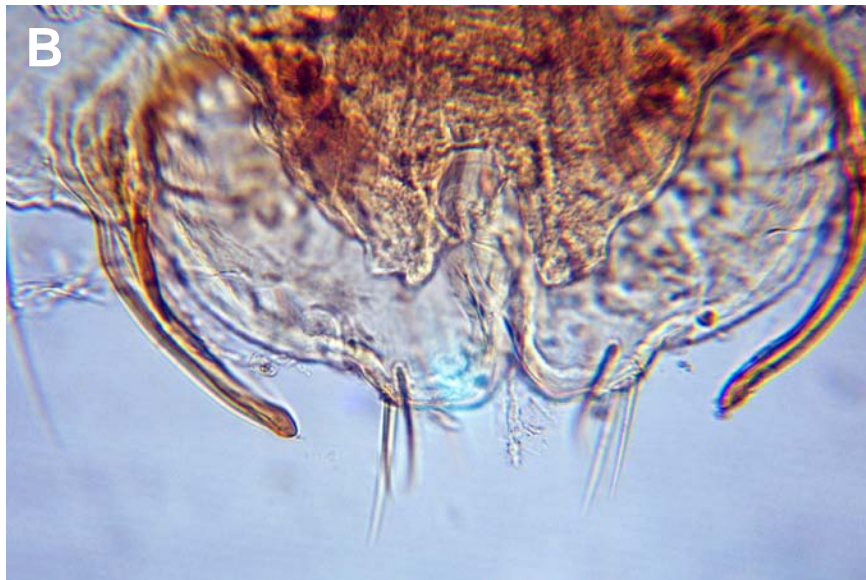
Total body length = 1.6 mm.

Trichodectes canis; female, anterior and posterior views.
Legend: a, antenna; e, egg.





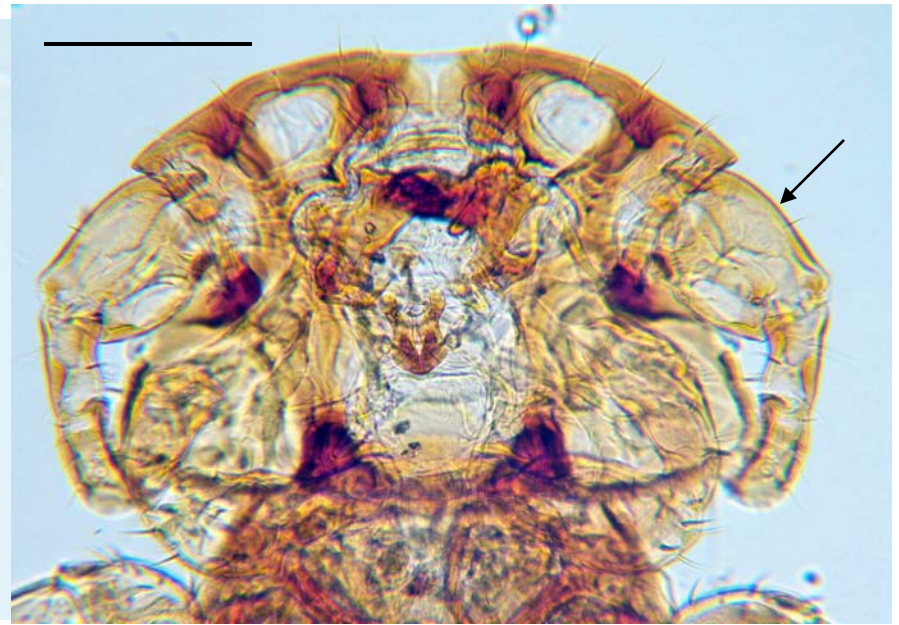
Trichodectes canis; female, posterior (3 views). Box in A enlarged in C.



Trichodectes canis. Note 3-segmented antennae showing sexual dimorphism; 1st antennal segment (arrows) enlarged in male.
Scale bars = 0.2 mm.

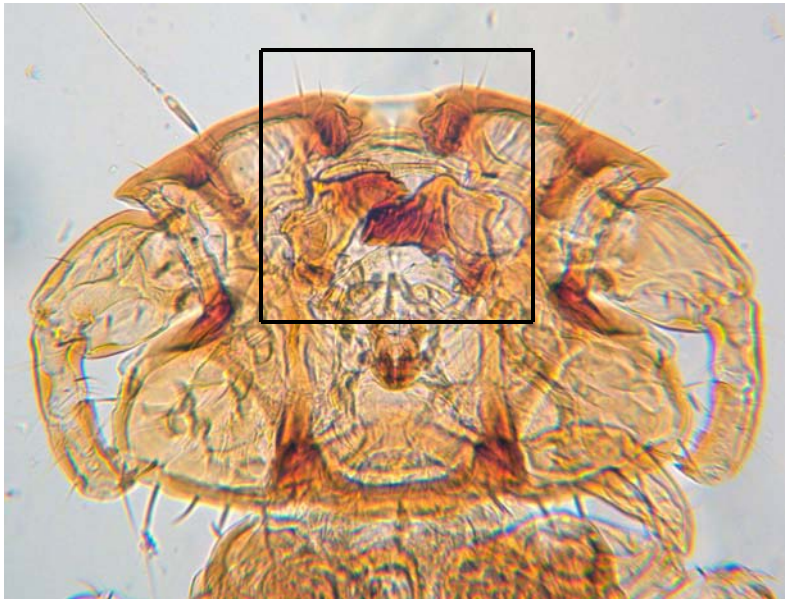


female

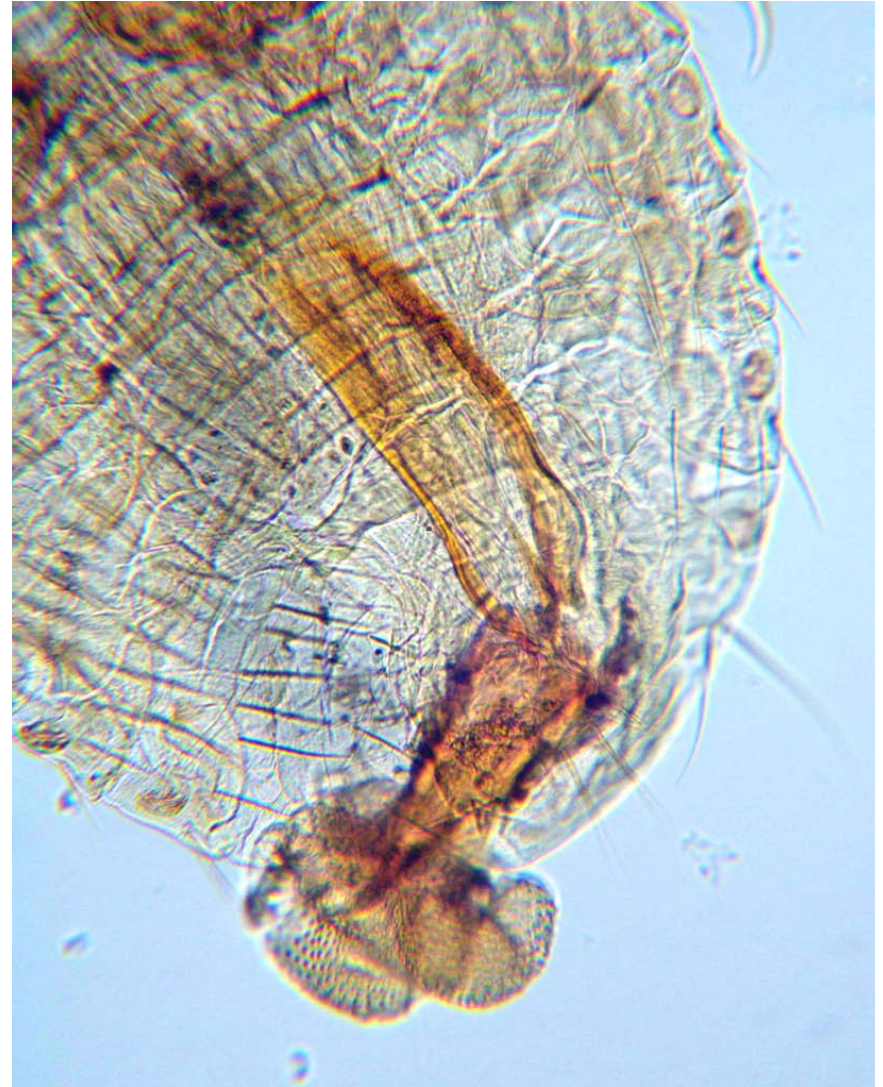


male

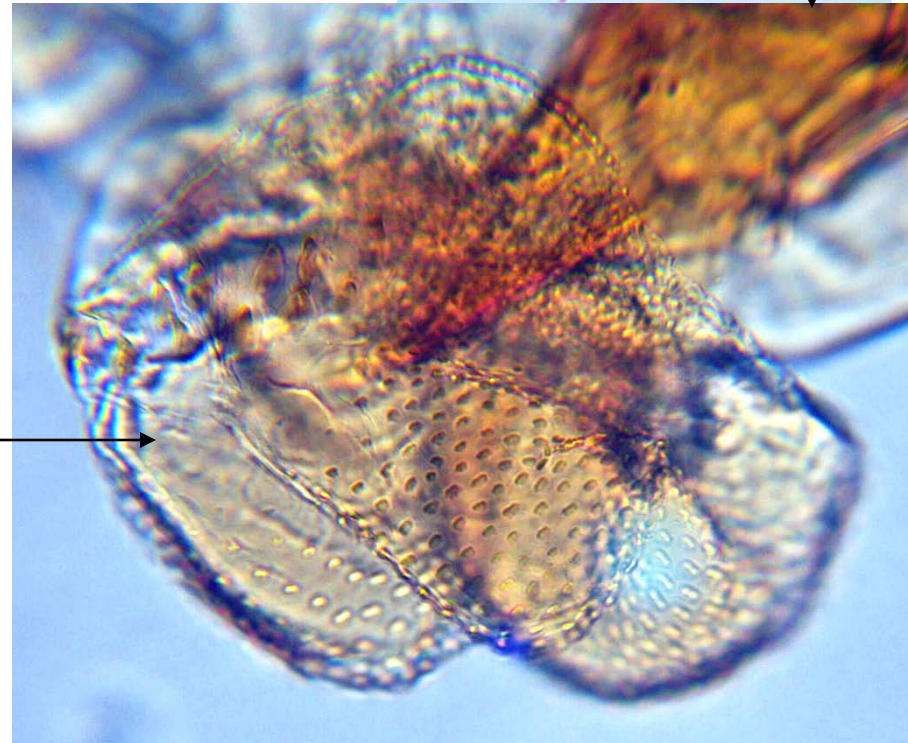
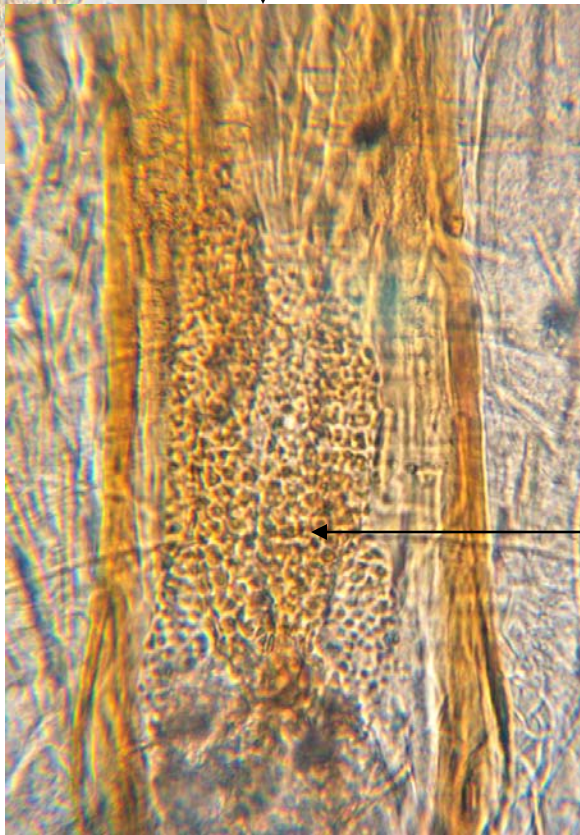
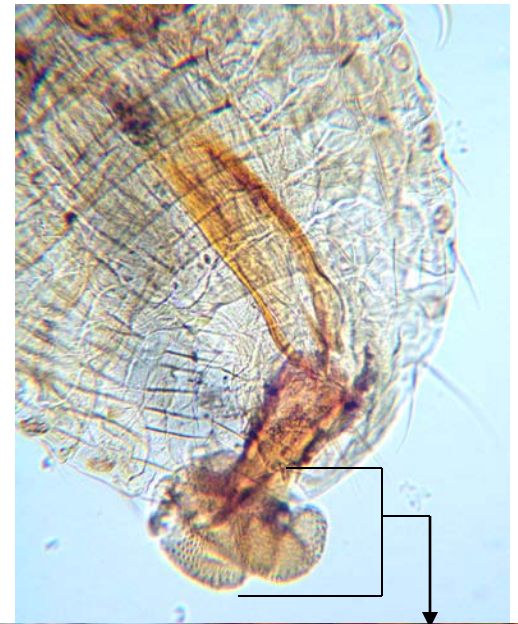
T. canis; male, mandibles. Box in A enlarged in B.



T. canis male genitalia: retracted (A); extended (B).



T. canis; male genitalia.



T. canis; abdominal spiracles. Legend: s, spiracle; t, trachea.

