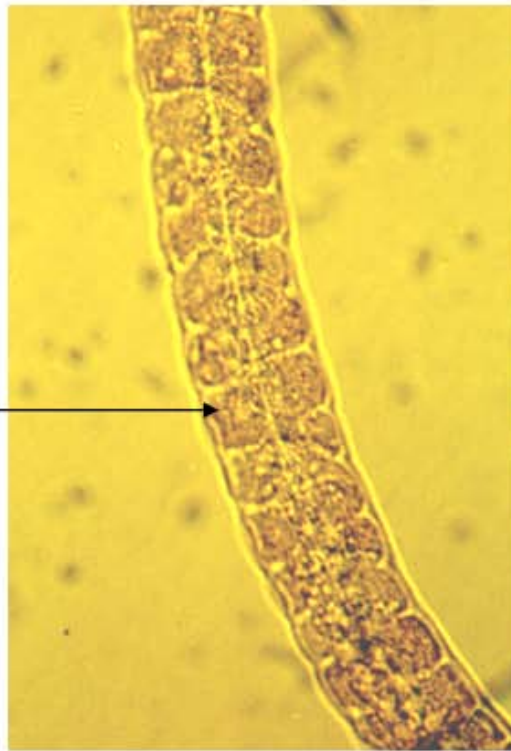


*Amphibiocapillaria tritonispunctata* female from small intestine of red-spotted newt. Legend: e, egg ("double-plugged", striated egg shell, single-celled zygote); o, muscular ovijector; s, stichosome; v, vulva.



*Amphibiocapillaria tritonispunctata* male. Legend: c, copulatory ala (copulatory bursa?); s, spicule.

