

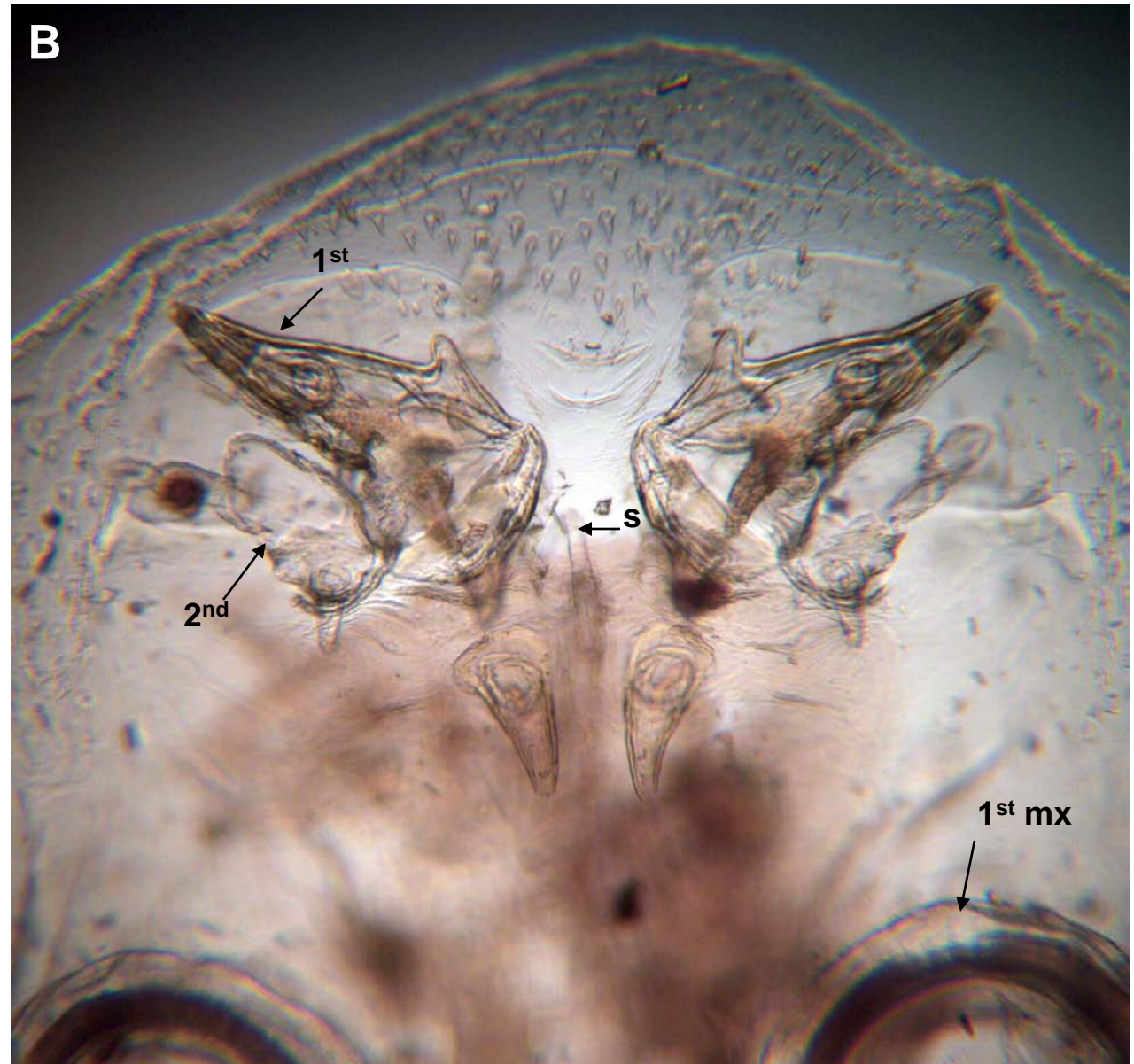
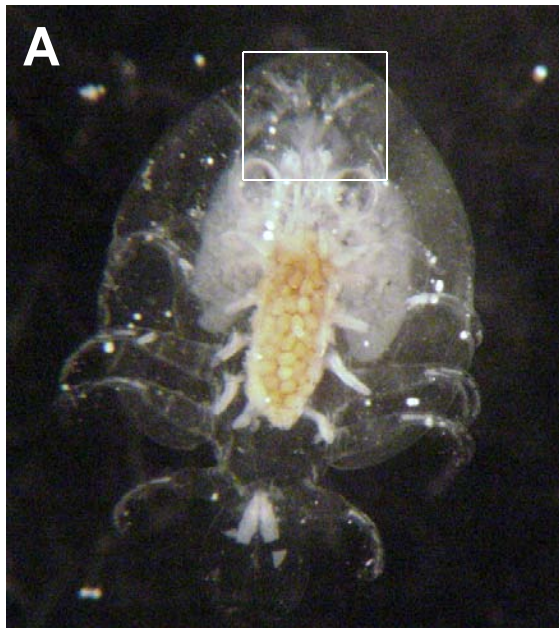
Argulus sp.: dorsal (left); ventral (right).



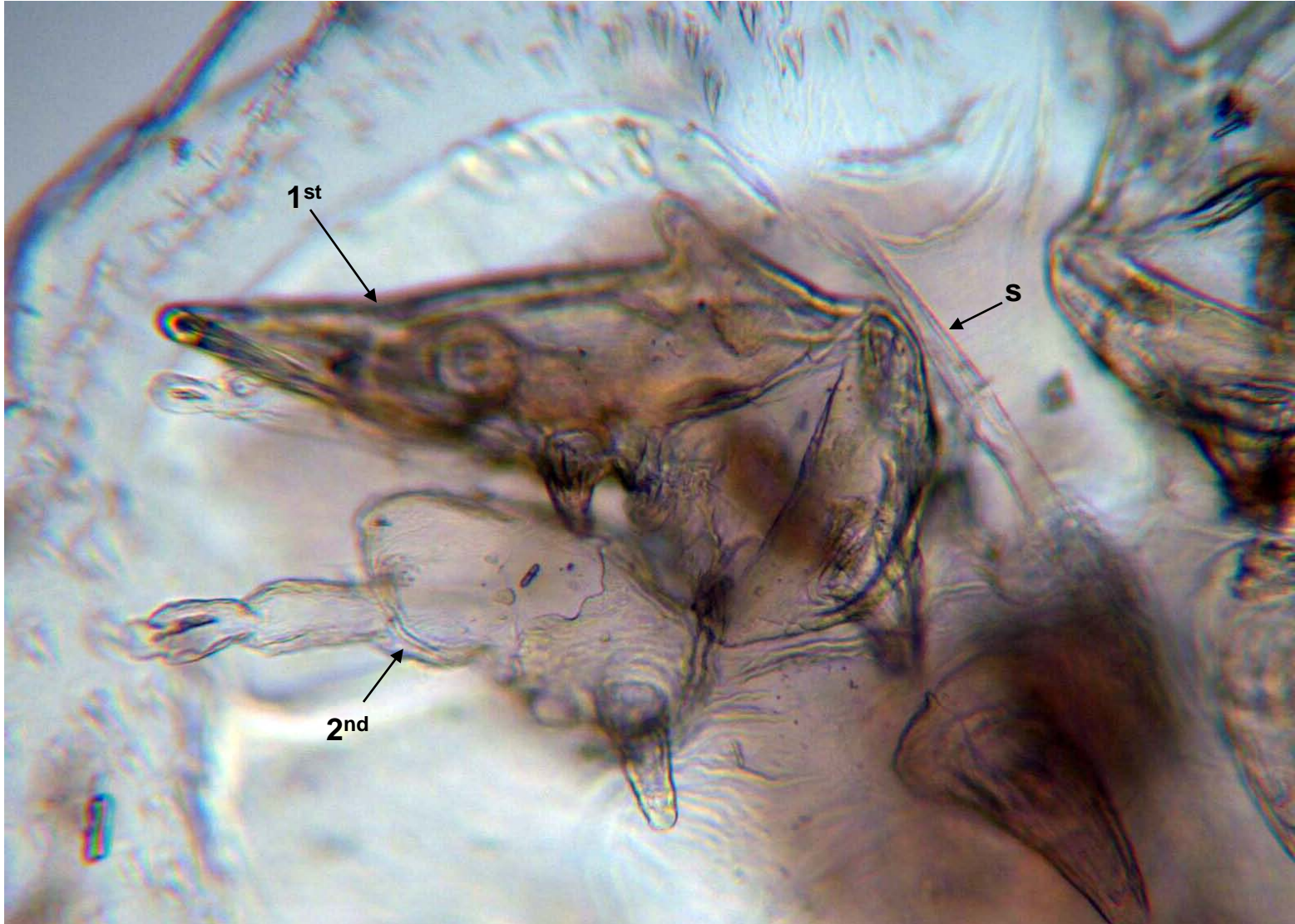
Argulus sp.: entire (A);
anterior (B); and abdomen
(C). Ethanol mounts.



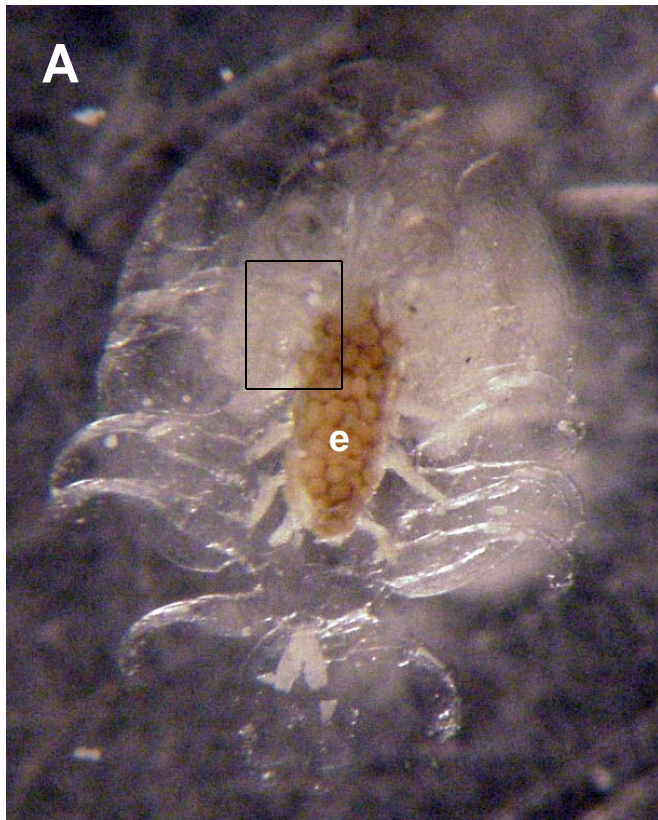
Argulus sp. Box in A enlarged in B. Legend: 1st, first antenna; 2nd, second antenna; 1st mx, first maxilla; s, sting.

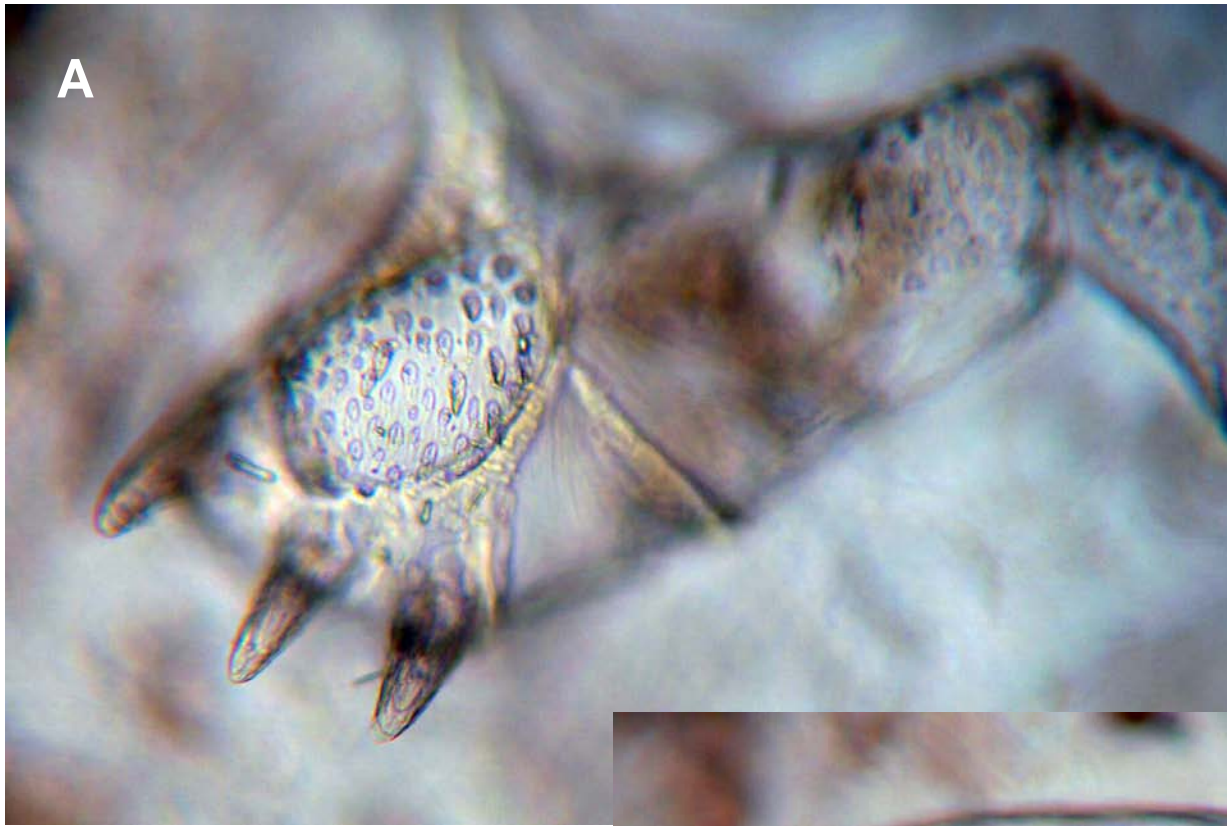


Argulus sp. Legend; 1st, first antenna (antennule of some authors); 2nd, second antenna (antenna of some authors); s, spine (note duct).

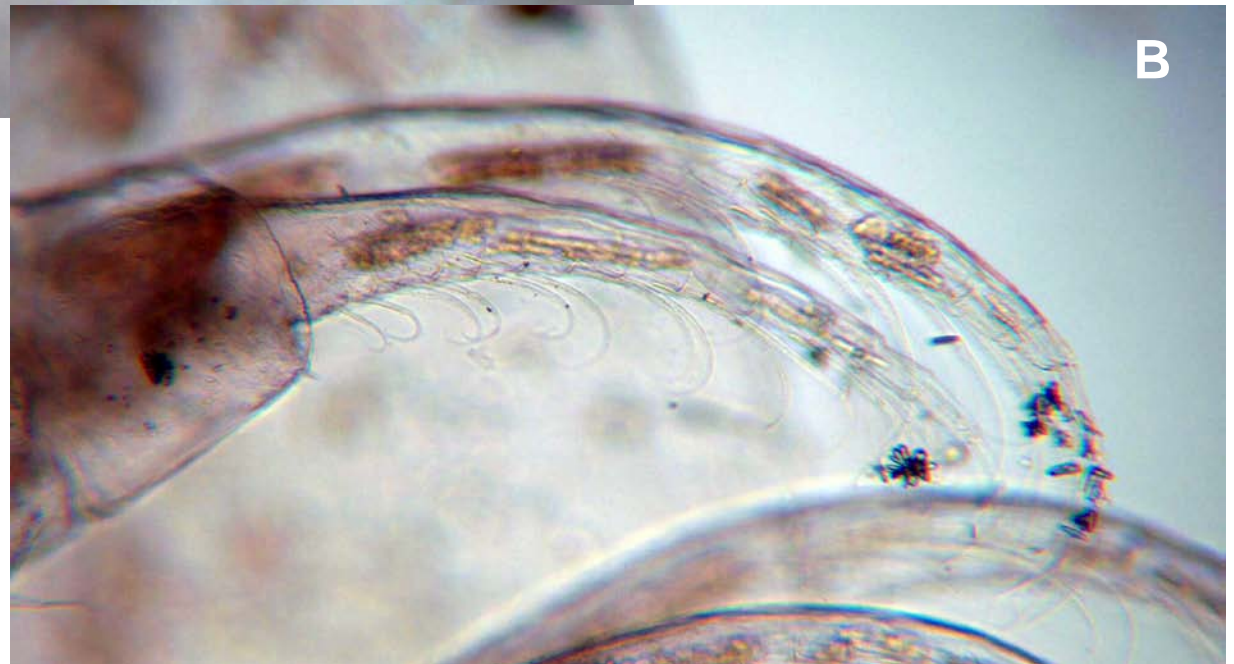


Argulus sp. Box in A enlarged in B. Legend: e, egg mass;
2nd, base of second maxilla.





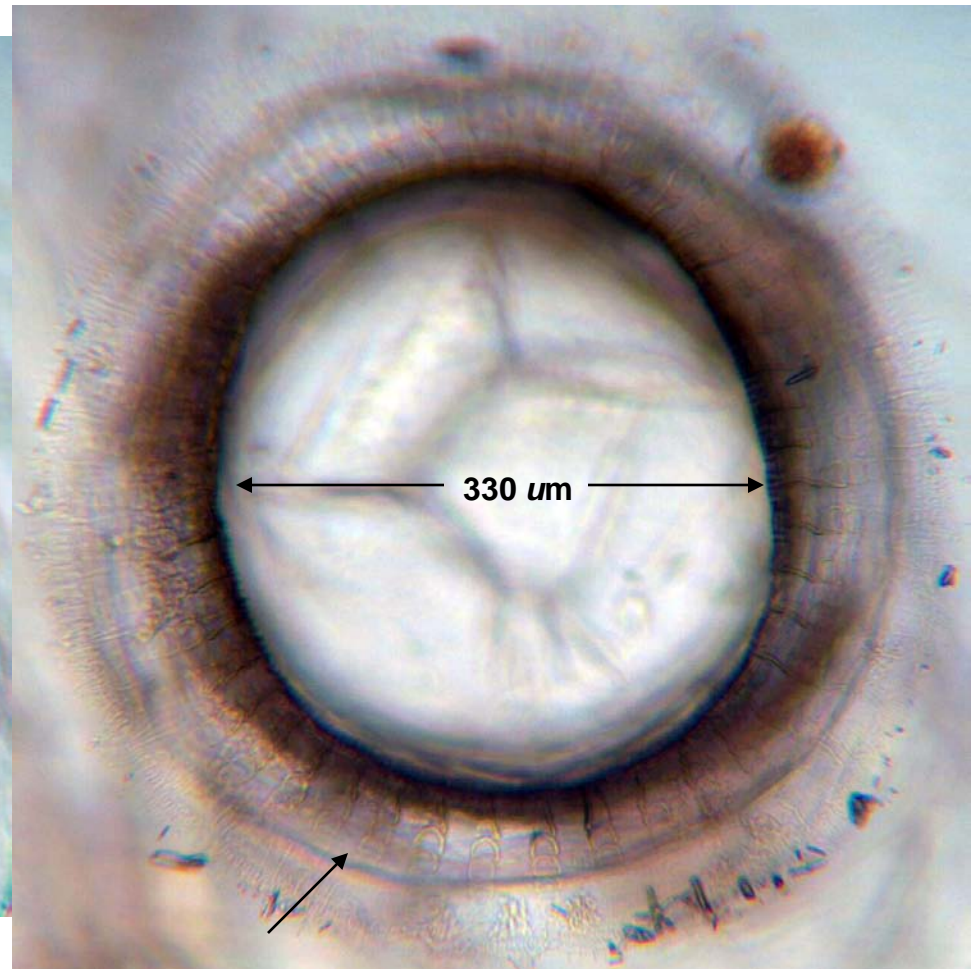
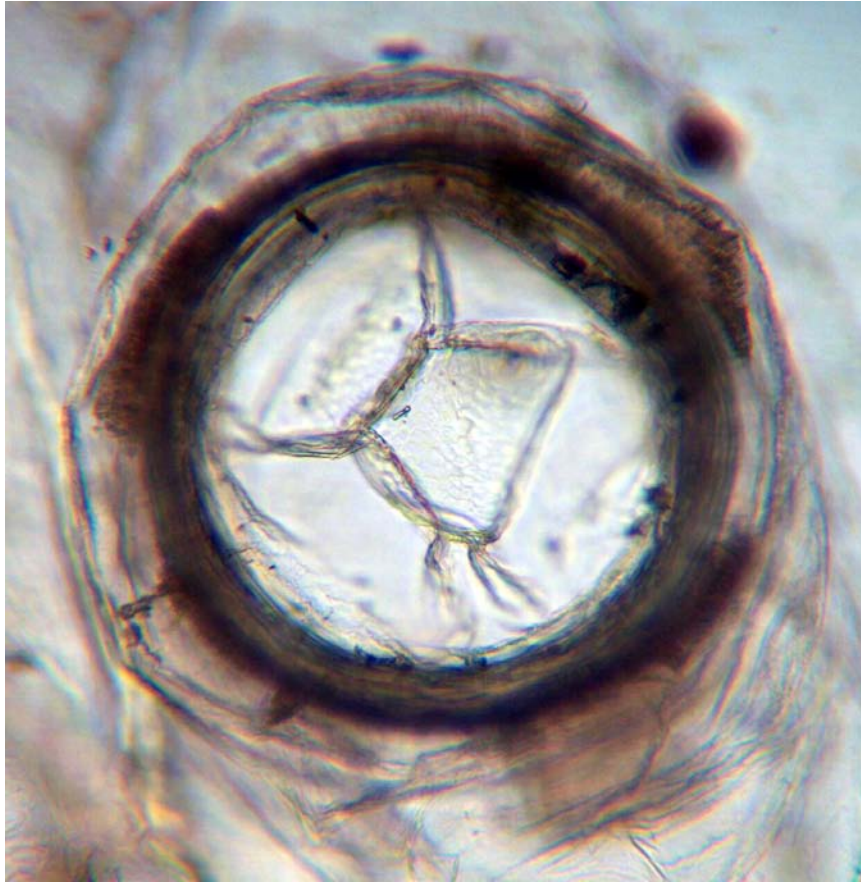
Argulus sp.: A, 2nd maxilla; B, biramous first thoracic appendage.



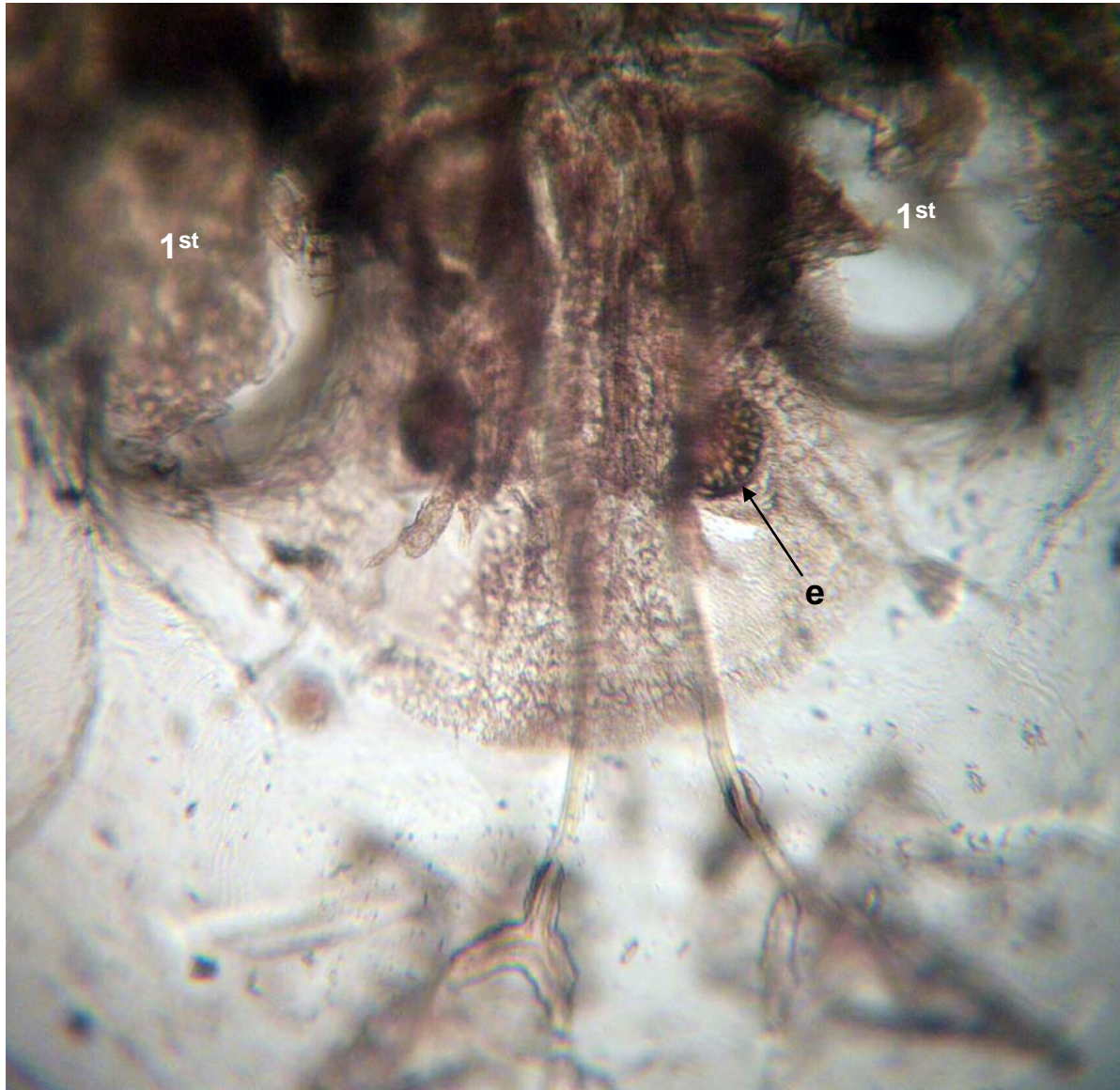
Argulus sp. Legend: 1st, first maxilla (maxillule of some authors);
2nd, base of second maxilla.



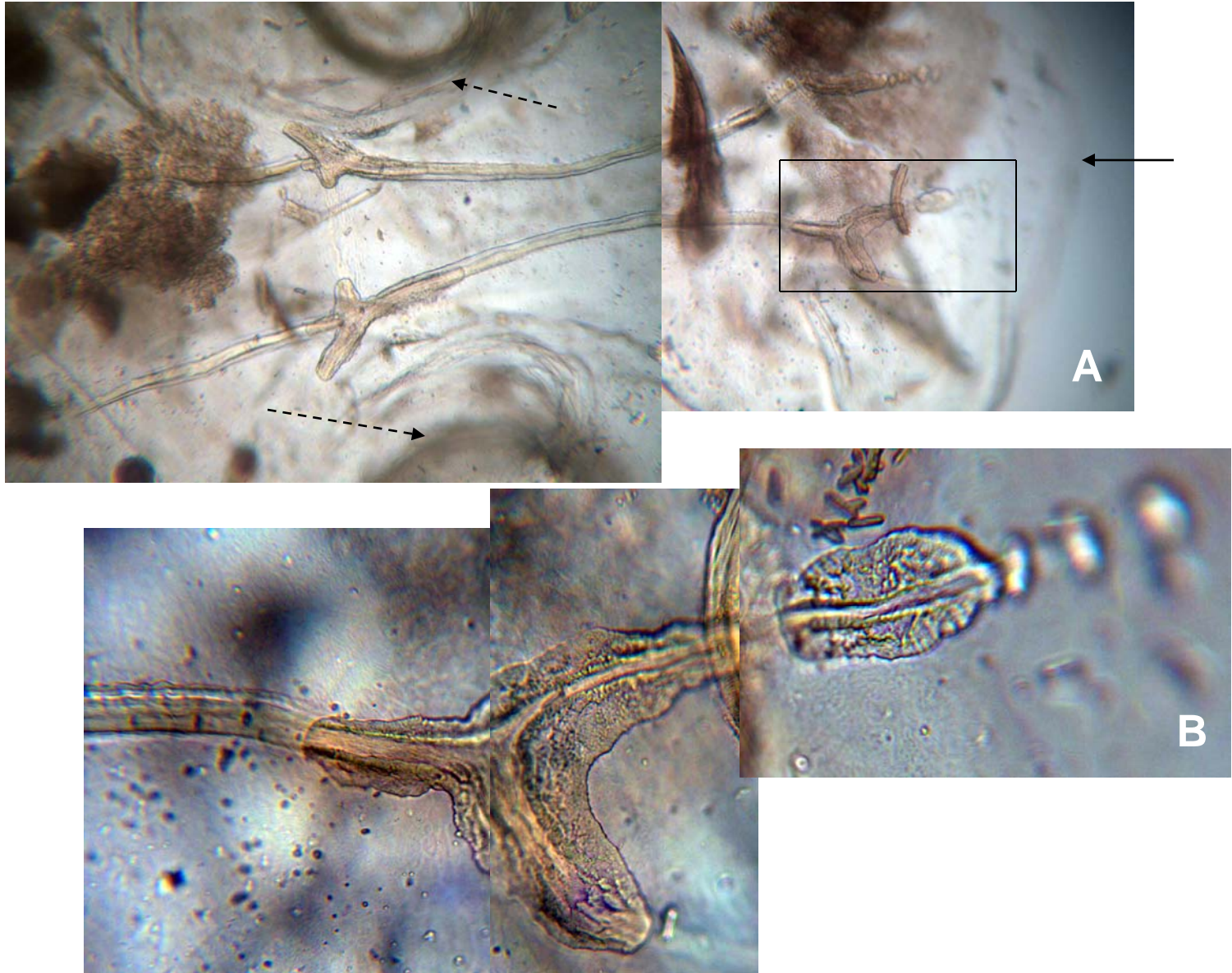
Argulus sp. 1st maxilla (2 depths of fields).
Note architecture of outer wall in right photo (arrow).



Argulus sp., aboral surface. Legend: e, compound eye; 1st maxilla;
(maxillule of some authors).



Argulus sp.; structures on aboral surface. Box in A enlarged in B.
Solid arrow anterior body margin; dashed arrows inner margins of 1st maxillae.



Argulus sp.: A, abdomen; B, anus.

