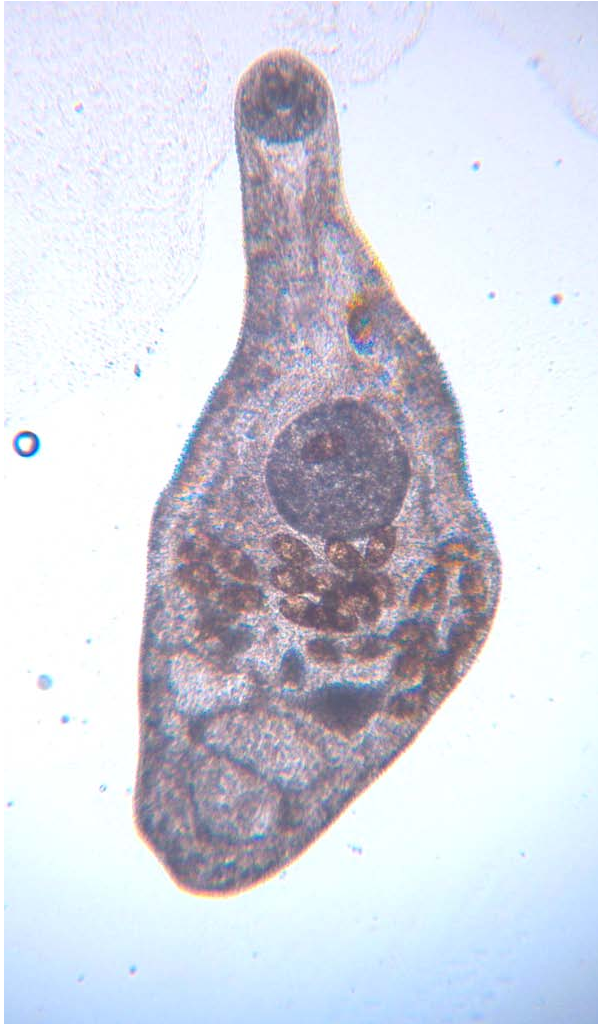


Plagiophorus sp. entire;
ex: *Notropis* sp., gall bladder.

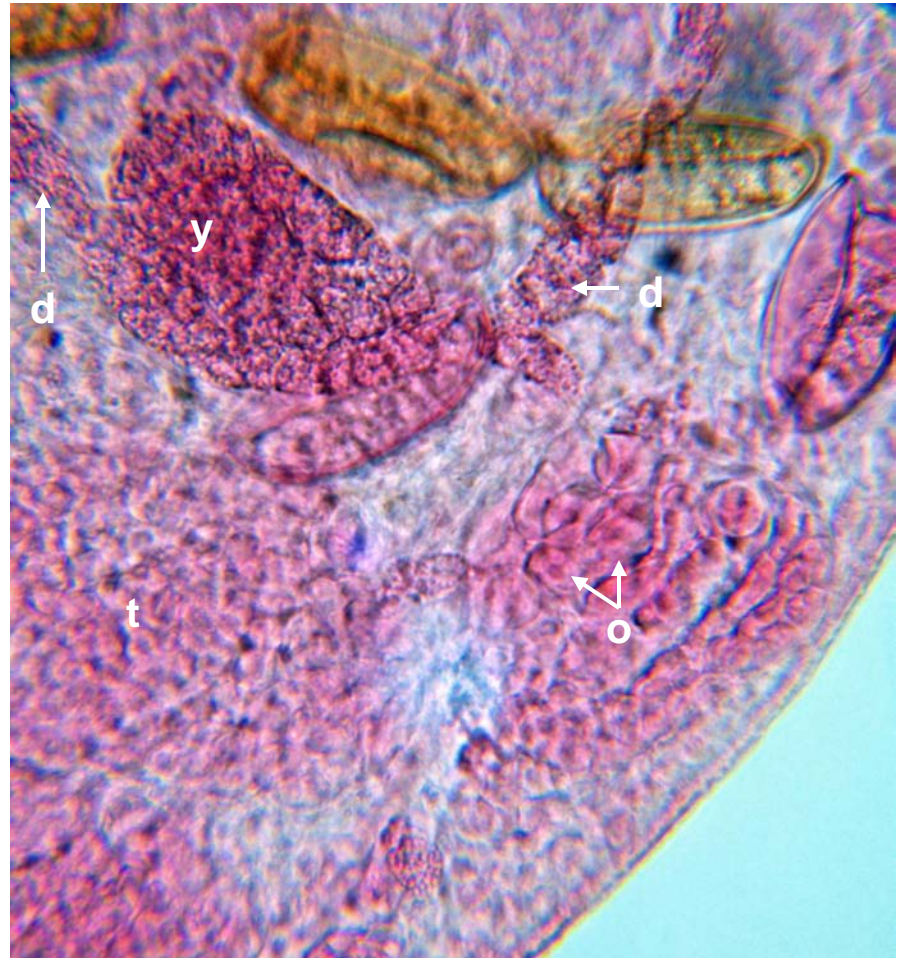
Legend: cs, cirrus sac; e, egg (eggs
in uterus); os, oral sucker; ov, ovary;
p, pharynx; t, testis; v, vitelline
glands; vs, ventral sucker.

This animal is 1.0 mm long.
Semichon's acid carmine stain.

Plagiophorus sp.: water mounts of living specimens
extending (left), contracting (right).



Plagiophorus sp.; anterior (A), posterior (B). Legend: d, vitelline (yolk) duct; o, ova in ovary; t, testis; y, yolk material.



Plagiophorus sp.; in situ (extending individual, arrow).
Legend: f, fatty tissue; g, ball bladder; l, liver.

